



Metzger Park Local Improvement District Advisory Board Agenda

Date: Monday, October 24, 2022

Time: 7:00 p.m.

Place: Zoom online meeting <https://us02web.zoom.us/j/87910515970>

Item 1: Call to Order, Introductions, Sign-in

Item 2: Public Comments

Item 3: Approval of Minutes

- April and July 2022 minutes

Item 4: Operations Report

Item 5: Old Business

- Public Communication
 - Metzger Park Update mailing
- Dog Park discussion

Item 6: New business

- Adoption of the 2023 MPLIDAB meeting schedule

Item 7: MPLIDAB Issues/Discussion

Item 8: Next Meeting: January 23, 2023



Metzger Park Local Improvement District Advisory Board Minutes

Date: April 25, 2022

Time: 7:00 p.m.

Place: Online Zoom Meeting

Item 1: Call to Order, Introductions, Sign-in

- Meeting called to order at 7:04 p.m.

Present: Krissy Rowan, Holly Weick, Wilton Cloud, Darlene Dick

Absent: Carl Fisher

Staff: Carl Switzer, Peyton Ellis

Item 2: Public Comments

- None

Item 3: Approval of Minutes

- January 2022 minutes approved

Item 4: Operations Report

The MPLIDAB was updated on

- Hall rentals
- Playground safety chips installed
- Addressing people allowing dogs to run free on tennis courts

Item 5: Old Business

- Future Capital Improvement planning
 - Playground ideas discussed
 - Keep historic themes (horses and trains), timber nature play structures and natural materials
 - Desire for accessible and interactive amenities as well as interpretive signs
 - Desire for more seating

- Possibility of pavilion that has a train station theme
- Having a settler theme and photo opportunity locations

Item 6: New business

- MPLIDAB was updated that staff will take MPLIDAB recommendations on new/reappointed members to the Board of County Commissioners this summer,
- Future Park Improvements
 - Remove unused horseshoe pits
 - Discussions about adding a dog park. Concepts and cost estimates to be shared at July meeting.

Item 7: MPLIDAB Issues/Discussion

- Desire for AV/sound equipment in the hall
- Consider adding more chain to the big swings

Item 8: Next Meeting: July 25, 2022

Meeting adjourned at 8:40 p.m.



Metzger Park Local Improvement District Advisory Board Minutes

Date: July 25, 2022

Time: 7:00 p.m.

Place: Online Zoom Meeting

Item 1: Call to Order, Introductions, Sign-in

- Meeting called to order at 7:04 p.m.

Present: Krissy Rowan, Wilton Cloud, Carl Fisher

Absent: Darlene Dick, Holly Weick

Staff: Carl Switzer, Peyton Ellis

Item 2: Public Comments

- None

Item 3: Approval of Minutes

- April minutes approval moved to next meeting (no quorum)

Item 4: Operations Report

Peyton updated the MPLIDAB on maintenance updates including tree and lawn care as well as updates on maintaining the riparian area after the invasive ivy is treated by Clean Water Services.

Item 5: Old Business

- Staff updated MPLIDAB on appointment recommendations. The County has opened a new recruitment and the MPLIDAB will be asked again for an updated recommendation.

Item 6: New business

- MPLIDAB was provided a budget update for Fiscal year 21/22.
- Dog park discussion
 - Discussion of size and location of two-sided dog park (one side for small dogs, one for large dogs). General support of concepts.
 - MPLIDAB wanted to better understand cost factor for bringing potable water to the site. Staff will research that and share at next meeting.
 - Discussion of adding bark chips to the dog park or leave it natural surface. Early support for natural surface.
 - Requested input from County Counsel about legal issues attached to having a dog park. Follow up at next meeting.
 - Interested in costs associated with signage, waste bags, and furniture being added to the dog park. Follow up at next meeting.
 - Interest in hearing community input.

Item 7: MPLIDAB Issues/Discussion

- MPLIDAB asked about the age of the existing large playground structure. *It was installed and opened in spring 2002.* MPLIDAB asked if there is signage indicating appropriate age usage recommendations on existing large playground structure. *There are stickers indicating the structure is intended for children ages 5-12 years old and stickers stating that adult supervision is recommended.* Asked to have age appropriateness signage on any new equipment.
- MPLIDAB asked about the possibility of using the Metzger Park Hall as a cooling center during heat waves. Staff share that recommendation with County Health and Human Services, and they indicated that they will keep that in mind for the future but as it's not a regularly staffed facility it's not an ideal facility.
- MPLIDAB asked about having a ball/tire pump available to the public. *Subsequently a pump was added to maintenance shed for public use.*
- Desire to revisit the cost of developing a tree planting plan. Staff will work on that this fall.
- MPLIDAB inquired about the missing table along Hemlock (between the main park entrance and Hall Boulevard). *Table temporarily removed because it was generating a lot of garbage.*

Item 8: Next Meeting: October 24, 2022

Meeting adjourned at 7:52 p.m.

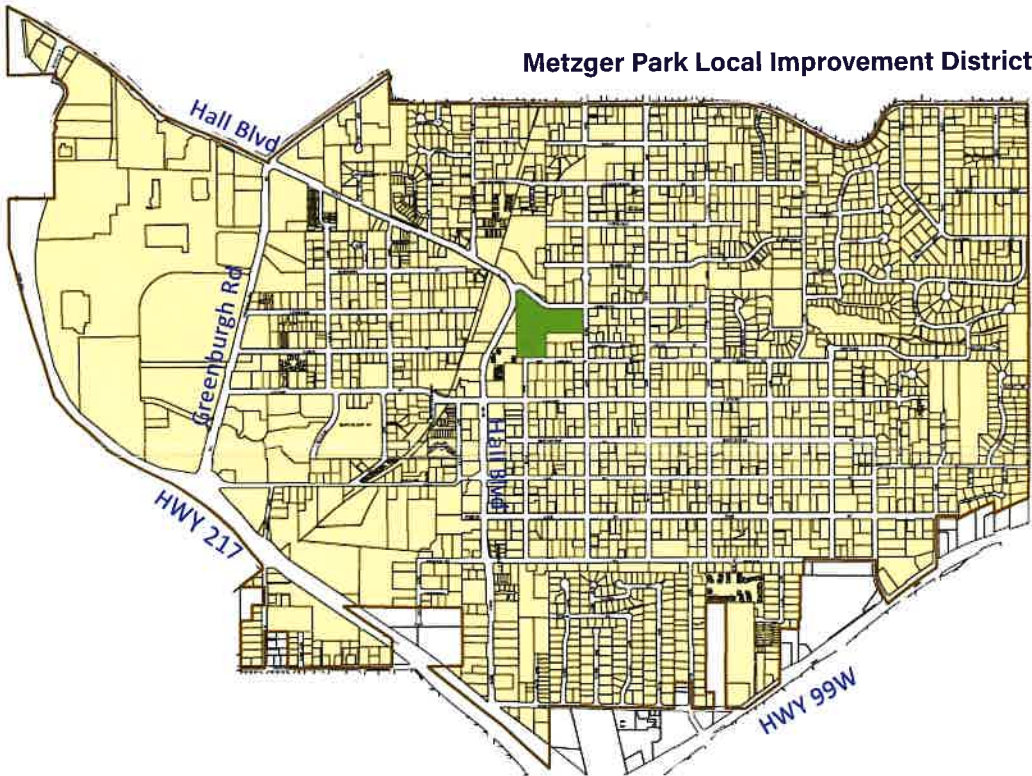


YOUR LOCAL PARK UPDATE: METZGER PARK



What is the Metzger Park Local Improvement District (MPLID)?

You reside within the MPLID! Since 1975, properties in the MPLID are assessed an annual fee to help pay for the operation, maintenance, and improvement of Metzger Park. The maximum assessment approved by the Washington County Board of Commissioners for 2022/2023 is \$158,995 and affects nearly 3000 property owners. This long-standing stewardship is why the Metzger community cherishes the park so much!

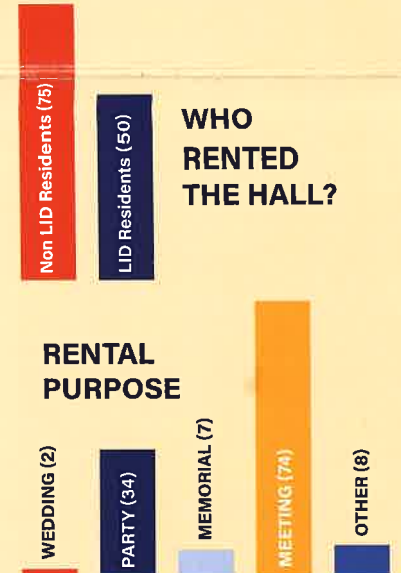


Patricia D. Whiting Hall

Did you know that the hall is available for rentals? Did you know that as a MPLID resident you get a discounted rental rate? There are even certain times it is available for MPLID residents to use at no cost. Rent the hall for meetings, weddings, memorials, and parties. More information can be found at washcoparks.org/pdw-hall.

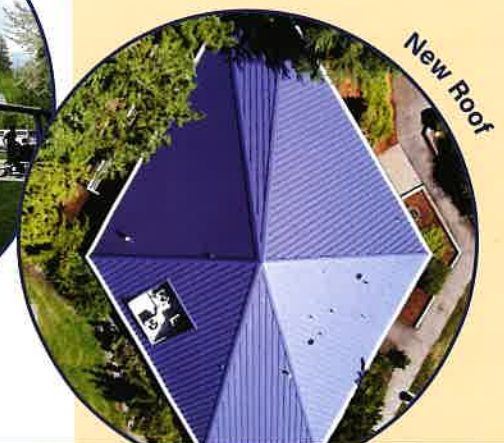
Over the last year, the hall was rented 125 times generating over \$16,000 in revenue for the park.

RENTALS By the Numbers



MPLID funding goes directly to the Park. It pays for things like tools and equipment, grass seed and play structure upkeep, as well as mowing, tree care and operating the rental hall. Your dollars are also used for capital replacement and improvements to the park. Recent improvements include the addition of a new sport court, new roof and heating/cooling system for the hall.

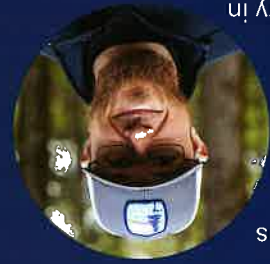
Future improvements being considered today include a playground renovation, a dog park, and rehabilitation of paved pathways. We want your input at an upcoming meeting. More information can be found on the flip side of this document.



Meet the Team



Richard Blake returned to Washington County in November 2021 after retiring as a long-time (30 years!) Park Ranger. Richard assists with rentals at the Patricia D. Whiting Hall, and lives in the neighborhood. He is a dahlia grower and enjoys the outdoors.



Luke Hill maintains the grounds at Metzger Park, and can be found at the park several days a week. He started with Washington County in 2019 and takes pride in improving the parks for visitors. Luke enjoys spending time with his family, archery hunting and camping.

Help shape the future of Metzger Park, APPLY TODAY!



The Metzger Park Local Improvement District has its own citizen advisory board to recommend investment, operational, and maintenance priorities. The MPLDAB meets quarterly and all meetings are open to the public. We invite you to attend and tell us what *you* think. The next meeting of the board is Monday, October 24, 2022 at 7 p.m. Check washcoparks.org/advisory-boards for meeting information. While there, you can find more information about joining the MPLDAB.

PPSRT STD
 US POSTAGE
PAID
 PORTLAND OR
 PERMIT NO 1558



Metzger Park – conceptual dog park location



WASHINGTON COUNTY
 TAX LOT
 1S 1 260C
 TREE & ASSET INVENTORY SURVEY
 EXISTING CONDITIONS
 METZGER PARK TREES

SHEET NO	99-216
DATE	06/05/17
BY	DAWN RICHARDSON
FOR	METZGER PARK TREES

GENERAL NOTES:

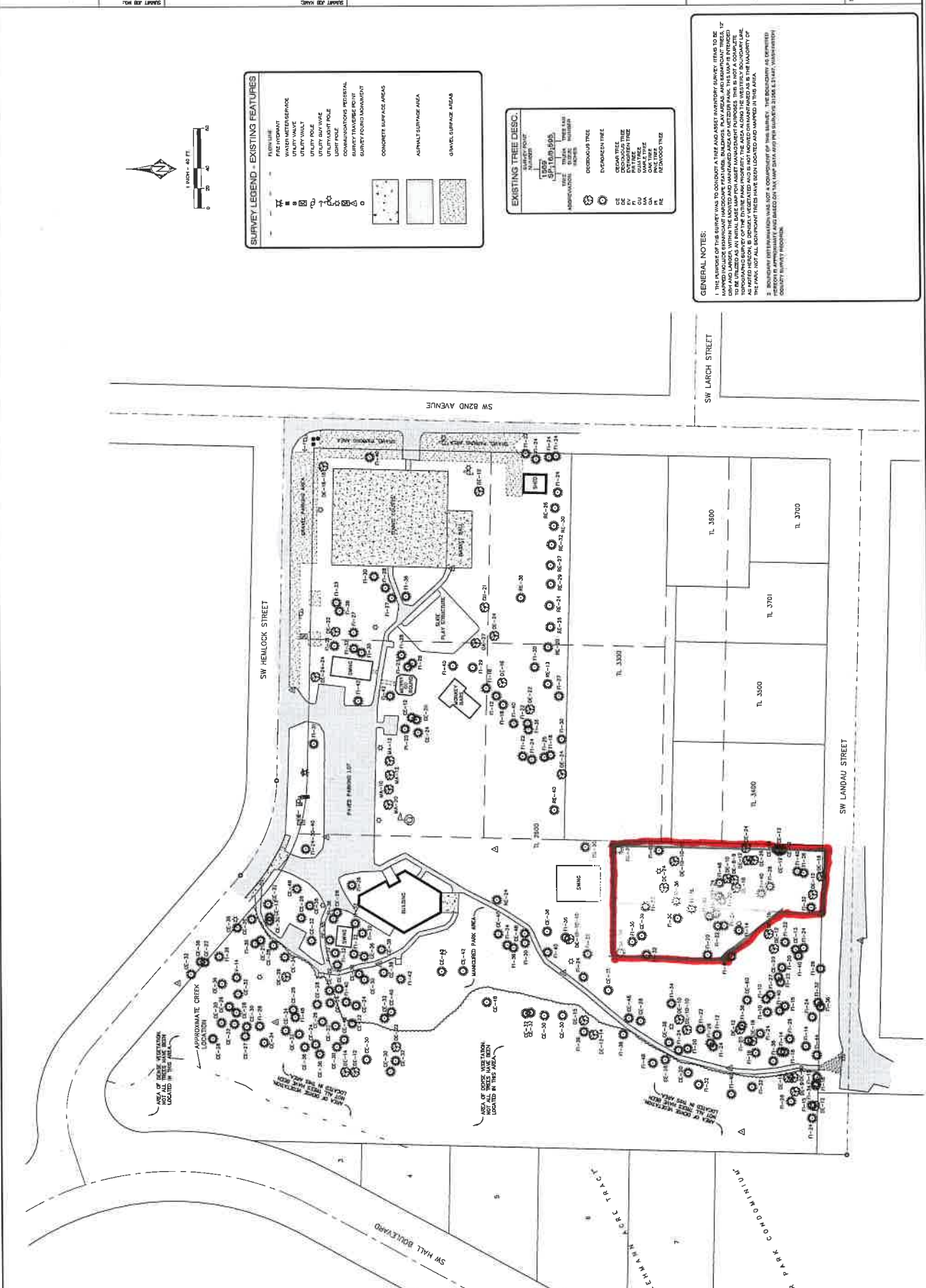
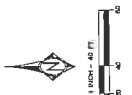
1. THE PURPOSE OF THIS SURVEY WAS TO CONDUCT A TREE AND ASSET INVENTORY SURVEY. IT WAS TO BE CONDUCTED IN ACCORDANCE WITH THE METZGER PARK TREE AND ASSET INVENTORY SURVEY (METZGER PARK TREE AND ASSET INVENTORY SURVEY) AS SET FORTH IN THE METZGER PARK TREE AND ASSET INVENTORY SURVEY. THIS LAND IS INTENDED TO BE UTILIZED AS AN OPEN SPACE AND RECREATION AREA. ANY OTHER USES SHALL BE THE RESPONSIBILITY OF THE USER. THE USER SHALL BE RESPONSIBLE FOR OBTAINING NECESSARY PERMITS AND APPROVALS FROM THE APPROPRIATE AGENCIES AND AGENCIES. THE USER SHALL BE RESPONSIBLE FOR OBTAINING NECESSARY PERMITS AND APPROVALS FROM THE APPROPRIATE AGENCIES AND AGENCIES. THE USER SHALL BE RESPONSIBLE FOR OBTAINING NECESSARY PERMITS AND APPROVALS FROM THE APPROPRIATE AGENCIES AND AGENCIES.

EXISTING TREE DISC

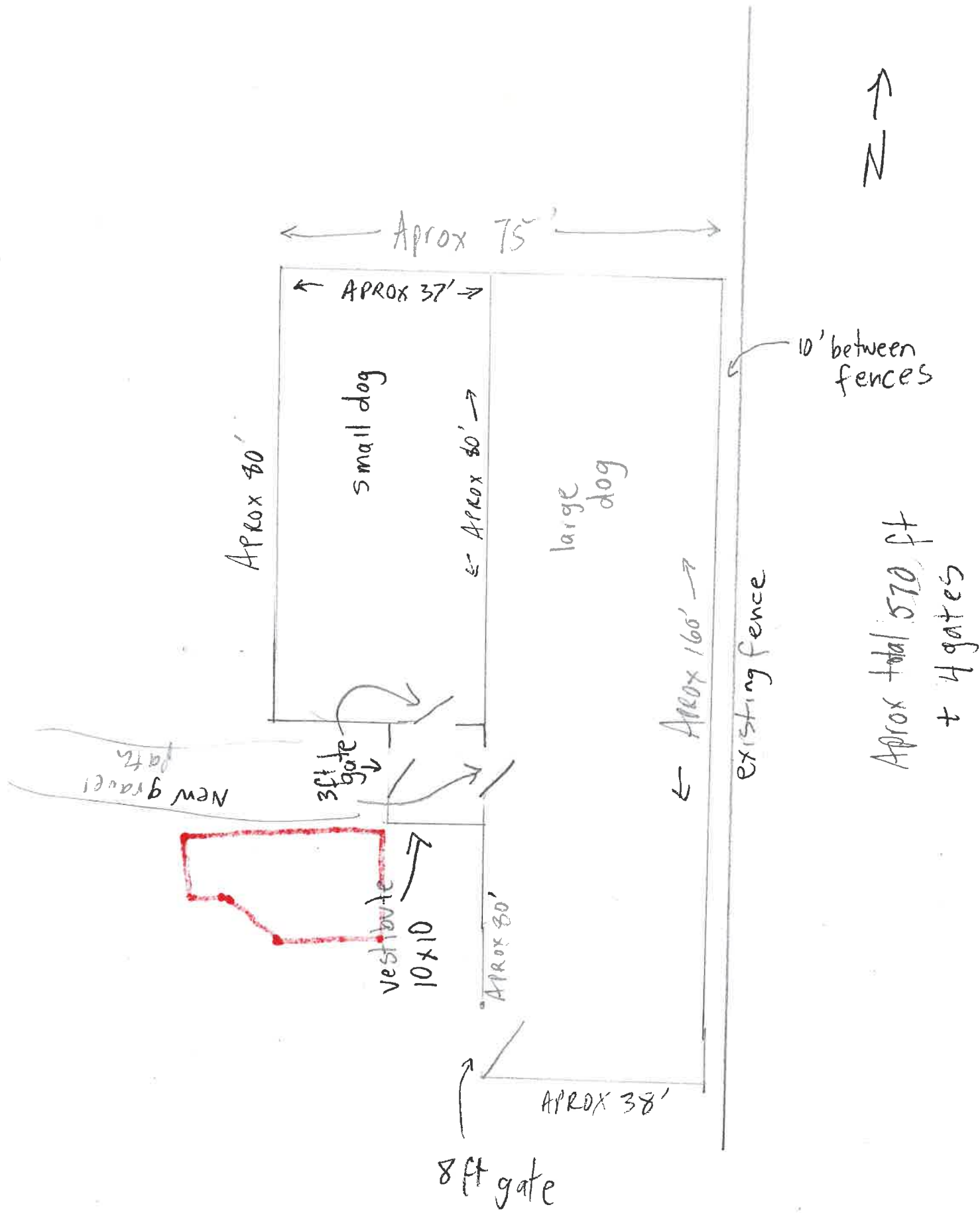
SP	SPRING FOUNTAIN
TR	TRANSFORMER
TI	TURF
TM	TRUNK MEASURE
TR	TREES
TM	TURF MEASUREMENT
TM	TURF MEASUREMENT
TM	TURF MEASUREMENT
TM	TURF MEASUREMENT

SURVEY LEGEND - EXISTING FEATURES

(Symbol)	FLUSH CURB
(Symbol)	PIPE HYDRANT
(Symbol)	CONCRETE SURFACE AREA
(Symbol)	ASPHALT SURFACE AREA
(Symbol)	GRAVEL SURFACE AREA
(Symbol)	UTILITY WALK
(Symbol)	UTILITY POLE
(Symbol)	UTILITY POLE
(Symbol)	UTILITY POLE
(Symbol)	UTILITY POLE
(Symbol)	UTILITY POLE
(Symbol)	UTILITY POLE
(Symbol)	UTILITY POLE
(Symbol)	UTILITY POLE
(Symbol)	UTILITY POLE



Approx 150x of main fence
 3 x 2 ft gates
 1 x 8 ft gate



Metzger Park Dog Park Concept

Planning Level Costs

Fencing	\$21,000	Fencing, posts, gates, etc.
Permitting	\$ 1,000	Plumbing, Building
Plumbing	\$20,000	
Waste Bags	\$ 500	Annual
Furniture	\$ 2,500	Two benches
Signage	\$ 1,000	Dog Park Rules sign
Path	\$ 500	Gravel, soil
Total (est.)	\$46,500	

Essential elements: Fencing, permits, waste bags, signage

Timing: Project can be built in phases, essential elements first

Unknowns: Clean Water Services approval, contracted plumbing costs



2023 Meeting Schedule of the Metzger Park Local Improvement District Advisory Board

Quarterly on the Fourth Monday of the Month

7:00 pm

Patricia D. Whiting Hall

8400 S.W. Hemlock

Portland, OR 97223

-or-

Online

(see agenda)

January 23

April 24

July 24

October 23

DRAFT